



hotelbeds

 **HOTEL LINK**

How to connect Hotelbeds to Hotel Link

A step-by-step guide

HOW TO CONNECT HOTELBEDS TO HOTEL LINK

By connecting to Hotelbeds, your property will gain unrivalled exposure to more than **71,000 travel distributors**, including Tour Operators, Travel Agents, Airlines, Loyalty/Employee Points Plans and OTAs.

Get access to a wide range of B2B distributors network today by following this step-by-step guide!

Hotelbeds has a **minimum** requirement of **10 rooms** to sign up.

To complete the mapping process, please follow these steps:



STEP ONE

NAVIGATE TO THE CHANNEL MANAGER SECTION WITHIN **HOTEL LINK EXTRANET**.

STEP TWO

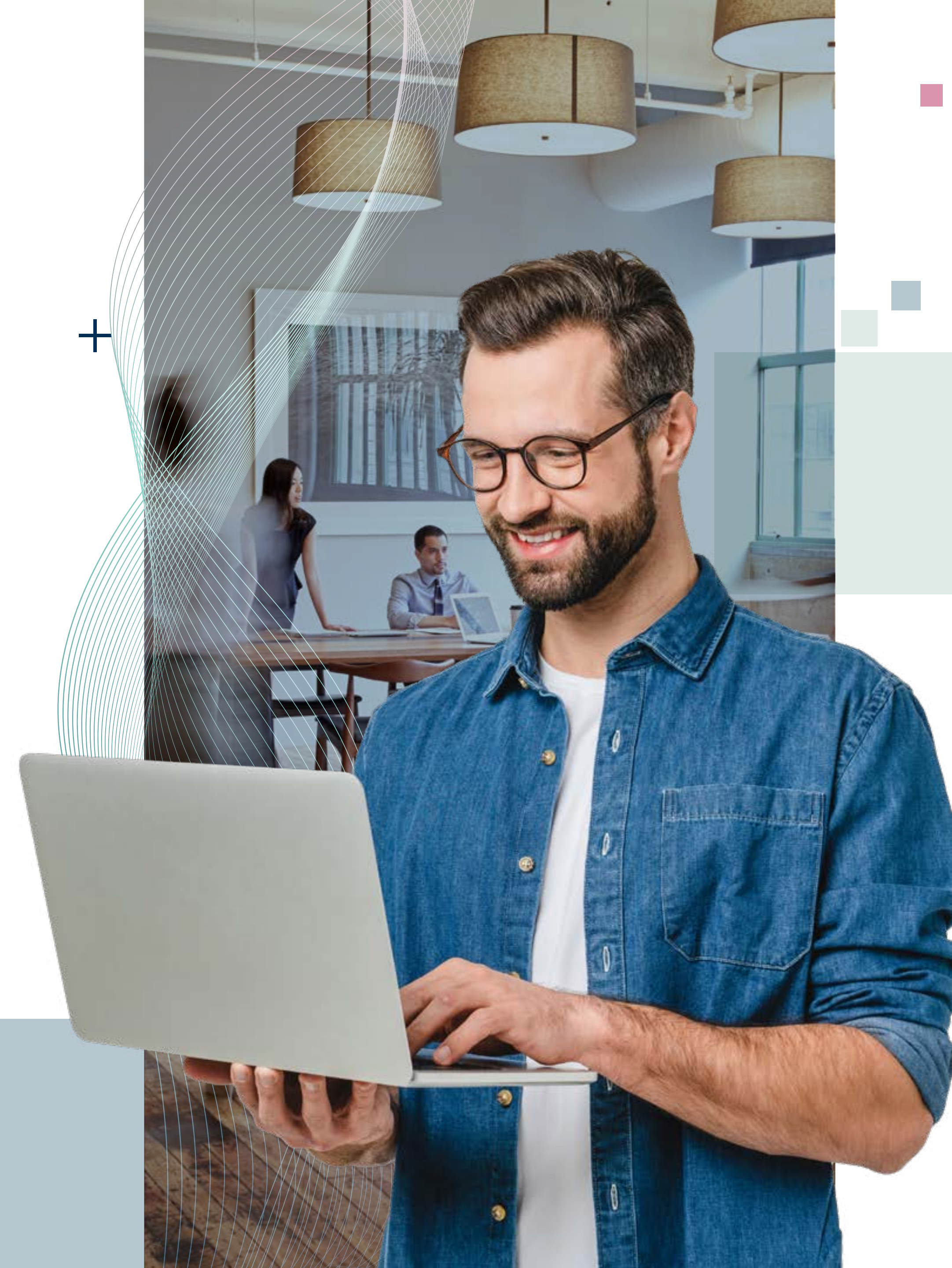
FIND AND CLICK ON **HOTELBEDS** IN THE LEFT MENU.

STEP THREE

ENTER YOUR **HOTELBEDS ID**.

STEP FOUR

ENTER YOUR **USERNAME** PROVIDED TO YOU BY HOTELBEDS.



STEP FIVE

ENTER YOUR **PASSWORD** PROVIDED TO YOU BY HOTELBEDS.

STEP SIX

SELECT ALL THE FOLLOWING OPTIONS:

- Send **Booking Notification** to Hotelier.
- **Rollback Availability** for Cancelled Bookings.
- Active **Booking Retrieval Auto Job**

STEP SEVEN

CLICK ON '**FETCH ROOMS**'.



STEP EIGHT

LINK THE RESPECTIVE **RATE PLANS** IN HOTELBEDS AND HOTEL LINK.

STEP NINE

CLICK ON '**FULL BOOKING RETRIEVAL**'.

STEP TEN

SAVE THE MAPPING.

Once you have completed these steps, Hotel Link system will **synchronise the information** with Hotelbeds, enabling a seamless integration of your inventory.





hotelbeds

[Click here](#) to register
your property today